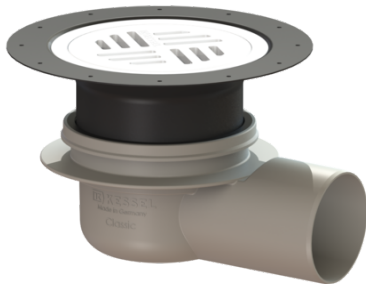


## Bathroom drain, Classic DN 70, horizontal, Slotted grating, K 3



### Article information

Item no.: 40170.30  
GTIN: 4026092028889  
Price group: 10

### Advantages

- Odour trap height: 50 mm
- Lip seal fixed on the drain body
- System 100 - modular design

### Description

The Classic bathroom drain is suitable for indoor floor drainage. The drain made of ABS is equipped with a telescopic, height-adjustable upper section made of polymer, a removable odour trap as well as a secure, reliably installed seal.

#### Variant

Sealing water height:	50 mm
Discharge rate (l/s) with 20 mm backwater:	0,8

#### General characteristics

Nominal size (DN):	70
--------------------	----

#### Dimensions

Vertical adjustment:	25 - 65 mm
Net weight:	0,31 kg
Gross weight:	0,57 kg
Diameter:	120 mm
Vertical adjustment:	vertically adjustable upper section
Length:	220 mm
Width:	180 mm
Height:	90 mm
Packaging dimension:	length
Packaging dimension:	width
Packaging dimension:	height

#### Tank/drain body

Number of outlets:	1
Material of drain body:	ABS
System:	lateral

#### Coverage features

Type of cover:	Round slotted cover
----------------	---------------------

Cover material:	Polymer
Colour of cover:	grey
Frame material:	ABS
Load class:	K 3 (EN 1253-1)
Upper section material:	ABS
Odour trap:	included